

# Supporting Teaching & Personalising Learning

## Teachers

**Schemes of work and lesson planning online**

**Lesson presentation tool**

**Electronic hand in and Mark Book**

**Audit and tracking**

**Secure message service**

**Library supporting additional articles, files, weblinks**

**News system**

**Discussion forums and chat**

**Question Engine**

**Online storage**

**Shared areas**

**Multiple user groups**

## Students

**Personalised lessons and resources for each subject**

**Electronic homework hand in**

**Secure messaging**

**Personal online storage**

**News and events**

**Personal calendar**

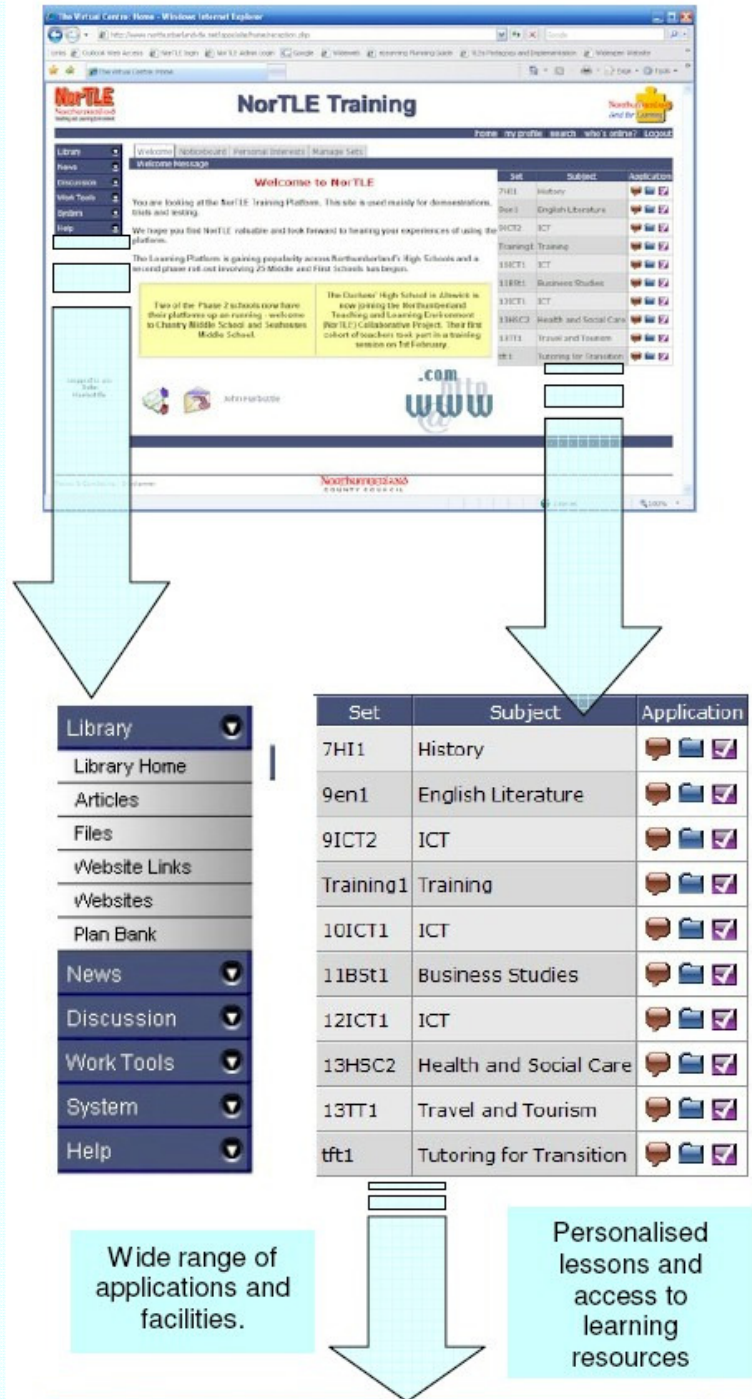
## NorTLE Central

**Supporting Northumberland Families of Schools, Federations and Networks**

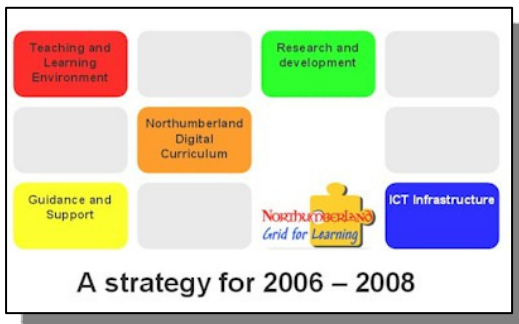
**Collaboration across schools**

**Share lessons and resources**

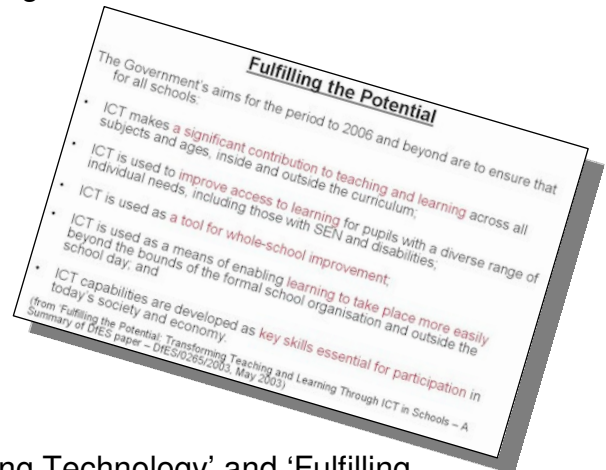
**User group storage and forums**



## Supporting e-learning in Northumberland Schools



The Northumberland Teaching and Learning Environment (NorTLE) is a collaborative project between Northumberland LA and our schools, working with Durham University Business School, Gateshead and Newcastle LA's. The overall aim is to provide a Teaching and Learning Platform that can support stated aims within current guidance which focus on Raising Standards through e-learning / the use of ICT throughout the curriculum.



Both 'Harnessing Technology' and 'Fulfilling the Potential' provided details about the proposals and developments towards embedding ICT firmly in the delivery of teaching and learning.

NorTLE provides for teachers an on-line opportunity to manage their teaching and learning resources in one location. They can collect together Powerpoints, photographs, worksheets etc and organise them for classroom presentation. Opportunities for learning beyond the classroom can be integrated too with home access to information and resources for pupils, where appropriate.

All schools are invited to get involved and implement the Learning Platform.

NorTLE Central – a shared platform – enables teachers from all schools to share ideas, resources, lesson plans and engage in discussion forums to support each.

If you are interested in getting involved, contact  
John Harbottle (E-learning Consultant)  
jharbottle@northumberland.gov.uk

